



## ZEPHYRUS<sup>®</sup> GelCube Nano

### Instructions for Use

*Ref. No.: Z-DOC-507-B (BW) – LED bluewhite  
Z-DOC-507-C (CW) – LED CyanW*





## Content

Warnings .....	3
Unpacking.....	3
Package contents .....	3
Setup .....	4
Warranty .....	5



## Warnings

Read this manual in its entirety before operating the ZEPHYRUS® GelCube Nano and keep the manual for future reference.



**CAUTION:** DO NOT look directly into the light source at any time. Always use the protective shield or cover the illuminator with the hood.



**CAUTION:** When working in a laboratory environment, it is always important to properly handle all reagents and chemicals. Use proper and common laboratory safety practices when working with reagents and gels stained with DNA dye. Always wear gloves.

## Unpacking

**NOTE:** Always handle the ZEPHYRUS® GelCube Nano and parts with care.

Carefully remove the system and all accessories from the carton and remove any protective pieces. Check for any shipping damage. In the event of shipping damage, a claim must be filed with the carrier. Check the contents of the package to make sure you have received all of the parts ordered:

## Package contents

- (1) Illuminator
- (2) Hood
- (3) Filter lens clip plus filter(s)
- (4) User's manual
- (5) A/C adapter (12V, 1.25A)
- (6) Amber filter protective shield
- (7) Mini USB to Micro USB cable
- (8) GelCube Nano tray



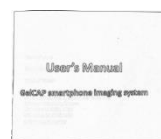
(1)



(2)



(3)



(4)



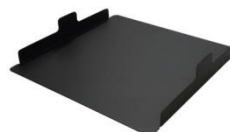
(5)



(6)



(7)



(8)



## PRODUCT COMPONENTS

- (1) Light selection button
- (2) DC power inlet
- (3) USB port



## Setup

1. Remove all tapes that hold items in place during shipping.
2. Place the ZEPHYRUS® GelCube Nano on a flat surface.
3. Connect the included AC adapter to the illuminator then plug into an electrical outlet.
4. Put the hood on the illuminator. (Figure 1).
5. Attach the filter lens clip to a smartphone and place the phone on the hood (Figure 2, 3, 4).
6. Connect the smartphone to the ZEPHYRUS® GelCube Nano with the included USB cable
7. Using the GelCAP app for operation.  
\*\*GelCAP app can be downloaded from Google Play. Please search "GelCAP" in Google Play.
8. Turn on/off the light: You can press the button or use GelCAP app to select your desired light source.
9. Place the amber filter shield in position as shown in Figure 6 for gel observation or gel cutting.



Figure 1



Figure 2



Figure 3



Figure 4



Figure 5



Figure 6



## *Warranty*

The ZEPHYRUS® GelCube Nano is warranted against defects in materials, workmanship and normal use for 1 year. If any defects occur in the instrument or accessories during this warranty period, Elisabeth Pharmacon Ltd. will repair/replace the defective parts/replace the instrument at its discretion without charge. Warranty is excluded in the case of following:

- unauthorized repair
- use of spare parts by anyone other than Elisabeth Pharmacon Ltd.
- used in the manner not described in this manual
- damage caused by accident, neglect, misuse, improper service, natural forces or other causes not arising from defects in original material or workmanship

## *Manufacturer:*

**ELISABETH PHARMACON Ltd.**

Rokycanova 4437/5, Brno-Židenice 615 00

[info@elisabeth.cz](mailto:info@elisabeth.cz) | [www.elisabeth.cz](http://www.elisabeth.cz) | tel.: +420 542 213 851