



ELIZYME LIBRARY QUANTIFICATION

Advantages

- qPCR for accurate quantification of library
- Accurate and reproducible quantification across a wide range of sample types, concentrations, fragment sizes and GC content
- Non-PCR inhibiting intercalating dye for better signal
- Hot-start technology

Compatibility

- Suitable for quantification of NGS libraries for Illumina® platforms containing the p5 and p7 flow cell sequences.
- Compatible with all qPCR platforms

Availability

- ROX is included separately with the mix (the ROX dye can be added according to your needs)
- Primer mix
- Standards



ELIZYME LIBRARY QUANTIFICATION KIT

Accurate quantification of library plays a crucial role in next-generation sequencing. When pooling libraries, any deviation of concentration between samples can result in variations in the number of sequenced reads. Low library concentration may result in low cluster density, whereas high library concentration may result in higher cluster density, which can lead to poor cluster resolution. Both cases result in poor data quality.

EliZyme Library Quantification Kit is based on qPCR method. **EliZyme Library Quantification Kit** for Illumina[®] contains all the reagents required for successful library quantification. Library quantification is performed by amplification of pre-diluted DNA standards and diluted library samples. Primers recognize the adapter sequences used for Illumina[®] next-generation sequencing. The average Ct value of each DNA standard is plotted against concentration in pM (in log scale) generating a standard curve used for calculating library concentration.

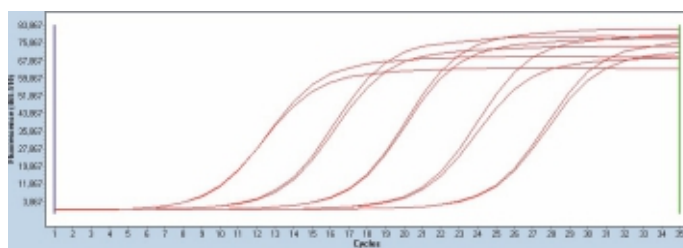


Fig. A1 - EliZyme Library Quantification Kit

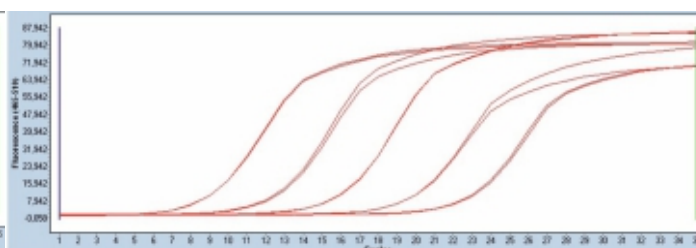


Fig. A2 - Competitor C

Figure A

Amplification of **EliZyme Library Quantification Kit** standards. **EliZyme Library Quantification Kit** shows equal distribution of amplification curves of the standards compared to the competitor "C" in Fig. A2.

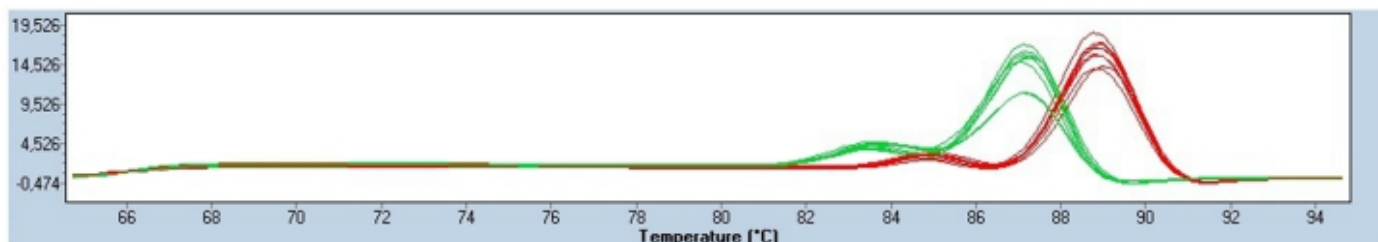


Figure B

Melt curve analysis reveals less primer-dimer formation compared to competitor "C". **EliZyme Library Quantification Kit** is represented by red curve and competitor „C" by green curve.

AVAILABLE KITS

	Ref. No.	Pack Size
EliZyme Library Quantification Kit	EZ4815	500 or 1000 reactions (according to reaction volume)