



## EliZyme™ Ladder 100 - 1500bp

### Intended use:

For Research Use Only. Not for use in diagnostic procedures.

### Storage:

Store at 25 °C for 6 months.  
Store at 4 °C for 12 months.  
Store at -20 °C for 24 months.

### Product description

A combination of PCR products and restriction enzyme digested plasmids. DNA amount of each band is provided based on loading 5 µL per well. EliZyme™ Ladder 100 - 1500bp is ready to load, no loading buffer is required.

### Content

	Ref.No.	Content	Size
EliZyme™ Ladder 100 - 1500bp	EZ8810	1×500 µl + 1×400 µl Loading Buffer	100 lanes
	EZ8850	5×500 µl + 1×2 ml Loading Buffer	500 lanes

	Buffer	Content
6x Sample Loading Buffer A	6× buffer	orange G and xylene cyanol FF

### Specifications

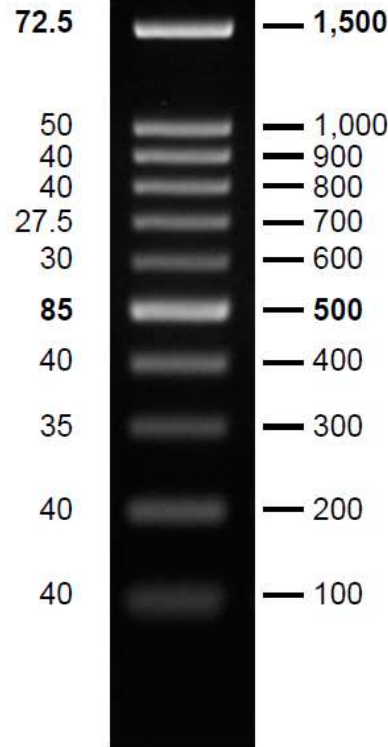
PCR products and double-stranded DNA digested with appropriate restriction enzymes, are phenol extracted and equilibrated to 10 mM Tris-HCl (pH 8.0) and 10 mM EDTA.

Concentration: 100 µg/mL

Recommended Load: 5 µL/well



DNA Mass (ng/5µl)                      Base Pairs



1.7 % TAE agarose gel

*Manufacturer:*

**ELISABETH PHARMACON, spol. s r. o.**

Rokycanova 4437/5, Brno-Židenice 615 00

[info@elisabeth.cz](mailto:info@elisabeth.cz) | [www.elisabeth.cz](http://www.elisabeth.cz) | tel.: +420 542 213 851



Catalog number



Upper limit of temperature



Batch code



Manufacturer



Use by (last day of month)



Contains sufficient "N" tests