



✓ DESCRIPTION

EliGene® Blood DNA Isolation kit is determined for rapid isolation of genomic and mitochondrial DNA from whole blood (fresh, frozen or stored at 4°C) and buffy coat. In the presence of detergent and Proteinase K, cells are lysed and proteins denatured. In the presence of chaotropic agent, DNA is bound to the spin filter, washed and eluted in TRIS-HCl buffer without EDTA. DNA is ready to be used for PCR, qPCR and sequencing.

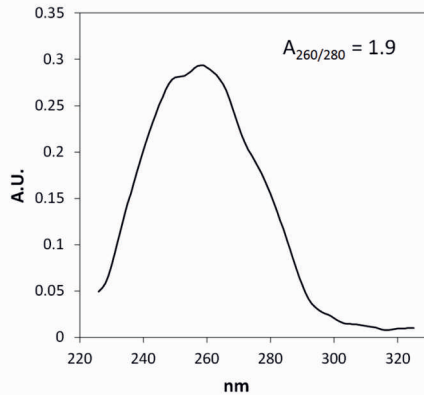


Figure A: Genomic DNA was isolated from whole blood using the **EliGene® Blood DNA Isolation Kit** and UV spectra was measured on NanoPhotometer® instrument.

✓ ADVANTAGES

- Rapid process of DNA isolation from whole blood or buffy coat in less than 20 minutes
- High quality isolated DNA suitable for any downstream application (PCR, qPCR, restriction digest)
- Complete package - all required components included in the kit

✓ EASY PROTOCOL

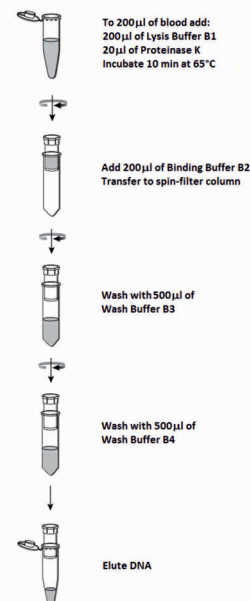
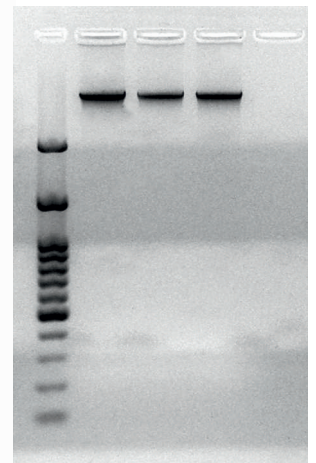


Figure B: Separation of isolated DNA from whole blood in 1.0% TBE agarose gel



CONTACT US

ELISABETH PHARMACON
 ROKYCANOVA 4437/5, BRNO-ZIDENICE 615 00
 CZECH REPUBLIC | +420 542 213 851
orders@elisabeth.cz | www.elisabeth.cz